

# WEAVERS GUILD

*of Greater Kansas City*

[www.kcweaversguild.org](http://www.kcweaversguild.org)

## JULY 2021 Newsletter

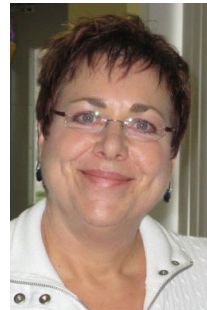
### NOTE FROM OUR PRESIDENT

At this year's KAWS (Kansas Alliance of Weavers & Spinners) conference, the Guild will have a display of our fiber creations that will showcase our high-quality techniques. To this end, Cindy Lessenden, our KAWS representative, is seeking ideas for a table design and she requests volunteers meet with her after our regular meeting on July 8 to develop a concept. For more information, see Cindy's newsletter article below.

We have many opportunities to be involved with our Guild locally as well as regional activities such as the KAWS conference later this year. KAWS was organized in 1979 to provide a vehicle for education and cooperation between weavers and spinners in the State of Kansas. They promote high standards of craftsmanship through exhibits and workshops, and stimulate public interest and appreciation for weaving and spinning. As a member of the Weavers Guild, you are automatically a member of KAWS. Their annual conference is an opportunity to expand regional awareness of the Guild and our many talented members.

Speaking of our regular meeting...be sure to sign up to bring a treat to share.  
[Sign up to bring a treat >>](#)

Another volunteer opportunity is afforded via our community service project: reStart. You may bring washcloths, towels, t-shirts, etc. to the meeting and I will make sure they are delivered to reStart. [Learn more about reStart >>](#)



*Janet Meddings*

### 2021 WEAVERS GUILD OFFICERS

- Janet Meddings, President
- Vicki Raynes, 1st VP, Programs
- Karen Neal, 2nd VP, Newsletter
- Rachel Rose, 2nd VP, Newsletter
- Cindy Smith, 3rd VP, Workshops
- Pamela Jenkins, Secretary
- Kate Webb, Treasurer
- Gail White, Scholarship

### MEETING & PROGRAMS

Meetings are on the second Thursday of each month at Westwood City Hall, 4700 Rainbow Blvd., Westwood, KS.

Meeting minutes are published on the Guild website: [Meeting Minutes Archive](#)

Guests are always welcome.  
Contact us at [weaversguild@gmail.com](mailto:weaversguild@gmail.com)

**9:30 am Coffee & Set Up**

**10:00 am Regular Meeting**

**10:30 am Show & Tell & Treats**

**11:30 am Program**

**12:30 pm Cleanup**

### MEMBERSHIP BENEFITS!

- [SCHOLARSHIPS](#)
- [WEAVING MENTORS](#)
- [CONTINUING EDUCATION](#)
- [HANDS ON WORKSHOPS](#)
- [GUILD LIBRARY](#)
- [TOOLS & EQUIPMENT RENTAL](#)
- [MONTHLY SHOW AND TELL](#)
- [COMMUNITY SERVICE](#)
- [CREATIVE HAND KC GUILD SHOW](#)
- [DUAL MEMBERSHIP IN KC FIBER GUILD & KAWS](#)

**VISIT US AT:**

**[KCWEAVERSGUILD.ORG](http://KCWEAVERSGUILD.ORG)**

### JULY 8<sup>TH</sup> PROGRAM

#### SWEDISH WOOL & HATTERSLEY LOOMS



Stefan Moberg recorded seminar on Swedish wool and Hattersley looms. The types of wool found in Scandinavia have a long history and connections to the types of wool used by the Vikings. There are some unique types of wool which are hard or even impossible to find in other places of the world. Stefan Moberg has worked with these unique sheep breeds to develop a Swedish tweed, utilizing their specific characteristics and

traits. The Hattersley domestic loom was introduced on the market around the turn of the century 1800/1900. It is a semi-automatic loom made from cast iron and powered by foot pedals. It has a strong connection to Harris Tweed and is still used in the Outer Hebrides to weave this world famous fabric. Come and hear the story of how to develop a yarn from scratch and how one of the Hattersley looms of the Outer Hebrides moved to Sweden, and is now living in the suburbs of Stockholm.

## KC WEAVERS GUILD PROGRAMS & ACTIVITIES

**IN-PERSON GUILD MEETINGS!** The Weavers Guild of Greater Kansas City has resumed meeting at Westwood City Hall, 4700 Rainbow Blvd., Westwood, KS. We will be following the CDC guidelines as updated on May 16, 2021 on the CDC website at: [When You've Been Fully Vaccinated, How to Protect Yourself and Others](#). We look forward to seeing you there!

### PROGRAMS PLANNED FOR 2021



**AUGUST 12<sup>TH</sup>:** Eileen Bobowski, Executive Director of The Sewing Labs, will be our guest. The subject will be an overview of The Sewing Lab's mission and what they offer to the community. In addition to Eileen's executive skill set, she has a life-long enthusiasm for sewing and is excited about growing and serving The Sewing Labs' mission to teach the legacy of sewing for employment, entrepreneurship, and enrichment.

<https://thesewinglabs.community/>

#### SEPTEMBER: Fiber Prep & Spinning for Weaving Warp and Weft by Clemes & Clemes

KCWG Board Member Election: During our regular meeting time, nominations for open Board Member positions can be made from the floor and will be announced at this meeting. The slate of nominees will be published in the October newsletter.

**OCTOBER: KC Weavers Guild October Member Challenge Bingo** The three members who have completed the greatest number of squares and who have provided a verbal show 'n tell of each during the October meeting will receive a \$25 Yarn Barn gift certificate. In the event of a tie, we will draw a name. Send content items marked with a \* to [weaversguild@gmail.com](mailto:weaversguild@gmail.com). Download your printable version of the KCWG Weavers Bingo Card [here](#).

**NOVEMBER: Textiles from Around the World** - *We are looking for members who own a textile that is unique to another country and would like to give a short presentation on how it was made and any cultural significance.*

KCWG Board Member Election: The election of guild officers will be held during our regular meeting time.

**DECEMBER:** Holiday party and gift exchange.

For more information or to suggest a program, please contact Vickie Raynes at [vlraynes@hotmail.com](mailto:vlraynes@hotmail.com)

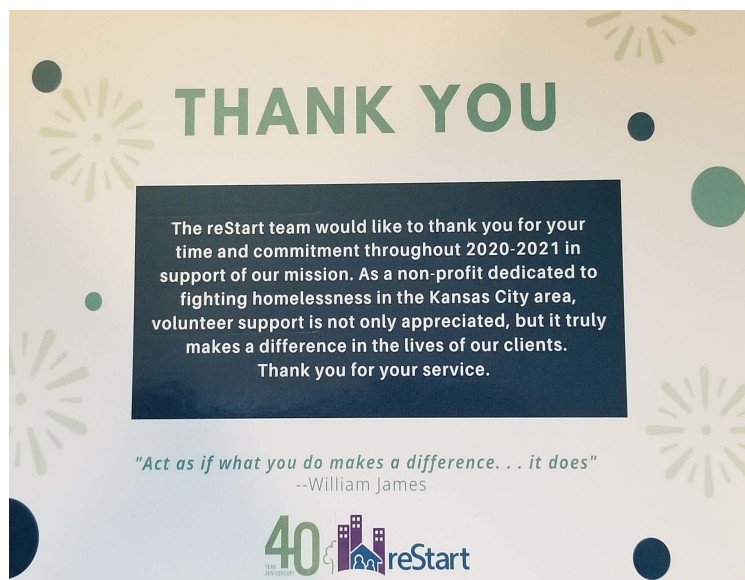


### OUR 2021 COMMUNITY SERVICE

The people at reStart appreciate all that we are doing for their organization! Join us in supporting this organization that provides Kansas City's most vulnerable population with housing services. Here are some ways we can help:

- Sack lunch components for their clients who go to work: non-perishable and individually wrapped food items such as peanut butter, beef jerky, granola bars, individually wrapped snacks of any kind, fruit/applesauce cups, bottled water, etc.
- There is an ongoing need for bath towels.
- If you would prefer to donate online, please visit their [Amazon Wish List](#) which provides a way to purchase items that are sent directly to reStart.

Items can be dropped off at a Guild meeting or taken to reStart at 9th & Troost, KCMO. For more information on the organization and to learn about other ways to volunteer, please visit the reStart website at [reStartinc.org](http://reStartinc.org)





# KC Weavers Guild September Workshop!

## Deflected Double Weave with Natalie Drummond

### Dates & Times

#### Pre-Workshop Zoom Meeting:

Thursday, August 19, 2021, at 7:00 PM CDT

#### Zoom Workshop Day 1:

Saturday, September 18, 2021, 9:00 AM - 4:00 PM CDT

#### Zoom Workshop Day 2:

Sunday, September 19, 2021, 10:00 AM - 4:00 PM CDT

### Cost

Weavers Guild of Kansas City Member: \$75

Non-member: \$100

Supplies and Loom are not included.

**Your spot is not reserved until payment has been received.**

### To Register

First sign-up via this link: [Workshop Registration](#)

After signing up via the link, please send the workshop fee to the Guild's [PayPal](#) account: [kcweaverspay@gmail.com](mailto:kcweaverspay@gmail.com) and mark DDW2 in the notes field.

The registration fee is non-refundable. If you can find a replacement, you may sell your spot. The Zoom workshop will be recorded, and available to workshop participants only. So, if you miss part of it or would like to review it later, you can.

**If you have any questions, please email Cindy Smith at [cynthiaelainesmith@gmail.com](mailto:cynthiaelainesmith@gmail.com)**

### Workshop Overview

**Zoom Workshop Day 1:** Weave deflected double weave samples on your pre-warped 8-shaft loom using various fibers and setts. Explore selvedge methods for beautiful finishing. Discuss various finishing methods with and without agitation. Cut samples off loom and hand wash samples prior to Day 2

**Zoom Workshop Day 2:** Discuss and compare hand washed samples-movement/deflection v. differential shrinkage. Explore a simple treadle OR tie-up change to weave your own scarf with remainder of your warp (or sample).

**Materials:** 8 shaft loom, 2-4 shuttles, yarns on material list (18/2 zephyr, Tencel or bamboo), SOAK for washing samples, and notebook/pen/pencil for draft and samples.

### Rave Reviews!

Our June workshop was a success. Here is a peek at some workshop samples and what Guild members are saying about learning Deflected Doubleweave with Natalie Drummond. Come to our July meeting to see more beautiful results of this event!

*"This workshop was fabulous. I learned a new weaving technique that expanded my creative mind to think about highly textured fabrics. Natalie is a great teacher and the technique she taught us will carry me for years."*

**- Janet Meddings**

*"I thought the workshop was great and Natalie was very patient and made many good suggestions. I thought her handouts were good and it was great that she provided copies of the power point presentations. I loved the final slide show that showed all the different variations."*

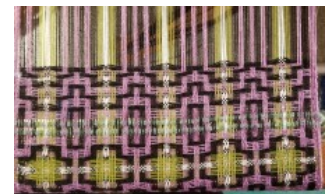
**- Catherine Hargis**

*"Weaving multiple selvages. Mixing fibers. Creating textures with thread deflection and shrinkage differentials. These are just a few of the weaving techniques I added to my skill set in this wonderful workshop. Natalie's demonstrations and explanations were detailed and easy to understand. Excellent teacher!"*

**- Karen Neal**



Workshop Results  
by Karen Neal



Workshop Samples  
by Janet Meddings

## OUR 2021 ANNUAL GUILD SHOW & SALE

*Save the Date!*

**FRIDAY, NOVEMBER 19 & SATURDAY, NOVEMBER 20, 2021**

Old Shawnee Town Hall, 11600 Johnson Drive, Shawnee, KS 66203

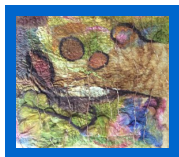
*Call for Artists!*

Preparations are underway! Members of the Weavers Guild and the Fiber Guild of Greater Kansas City are invited to participate. For more information and to get your artist application contact Sandy Cahill at [sandycahill@beweaveme.net](mailto:sandycahill@beweaveme.net)

*Organizers are considering the health and safety of artists and attendees at every step in the planning process. With guidance from the CDC, our venue operators, state and local regulations the Creative Hand board will continually monitor COVID-19 concerns and make adjustments to the event plan as needed.*



### GUILD RESOURCES



**The Felting Study Group** We meet every month, either outdoors or in someone's home. Everyone is welcome! Come see what we are doing and learn how to felt. We have several new members that are becoming quite good. Contact Judy Santner at 913-888-1731 or [jsantner3@hotmail.com](mailto:jsantner3@hotmail.com)

**Guild Library** The Guild maintains an extensive library of books, magazines, and videos that can be checked out by members in good standing. To download a searchable list of items in our library and to contact our Guild Librarian, Debbie Buddish, visit our website at: <https://www.kcweaversguild.org/library-equipment>

**Equipment Rental** The Guild owns looms in several sizes, as well as equipment that can be used by members in good standing to further their fiber art exploration. For more information, a list of guild equipment and to contact our Equipment Chairperson, Kathy Landers visit our website at: <https://www.kcweaversguild.org/library-equipment>



**Mentoring** Experienced weaving mentors are available to Guild members that can provide you with guidance in a way that makes sense while keeping your best interests in mind. Contact Jacqueline Jacobson via email at [hjsilversonic@yahoo.com](mailto:hjsilversonic@yahoo.com) to request a mentor in your area.

**Scholarships** We offer an educational scholarship for which any Guild member in good standing may apply. For more information and to download an application form visit our website at: <https://www.kcweaversguild.org/membership>

**Handling Used Looms** Be sure to check out the new document [Handling Used Looms>>](#) that you can share with anyone who has come into possession of a loom and wants to know how to proceed.

**Guild Website** Contact Janet Meddings at [weaversguild@gmail.com](mailto:weaversguild@gmail.com) to suggest content for our website.

**Newsletter Deadline** Submit your ideas, articles and photos to [knealkc@gmail.com](mailto:knealkc@gmail.com) by the 28th of each month.

**KCWG Care Connection** If you would like the guild to send a note to a member in need to let them know we are thinking of them, please contact us at [weaversguild@gmail.com](mailto:weaversguild@gmail.com)



## MEMBER SHOW & TELL

*A wide variety of beautiful fiber arts were on display during Show & Tell time at our June meeting. Handwovens, Felting, Boro Stitching, Garment Sewing, Quilting, Eco Printing, Tapestry, Open Stitchwork & Sculptural Weaving.*



*Share images of your creations with your fellow guild member by sending pictures to [knealkc@gmail.com](mailto:knealkc@gmail.com)*



## UPCOMING FIBER ART EVENTS



### Fiber "U" - Workshops & Vendor Exhibitions JULY 17-18, 2021

Cowan Civic Center, 500 E. Elm St. Lebanon, MO

Fiber "U" is all about promoting Fiber Arts education in the Midwest and providing the opportunity to expand your knowledge and skill in working with fiber.

- To learn more about classes, instructors, lodging and scholarships visit the website at <http://fiber-u.com/>.
- See photos and chat with other attendees by joining the closed Facebook page, [Fiber U in Lebanon, MO](#)



### 34TH ANNUAL SHAWNEE INDIAN MISSION FALL FESTIVAL

SATURDAY, OCTOBER 9<sup>th</sup> • 10AM-5PM

SUNDAY, OCTOBER 10<sup>th</sup> • 11AM-4PM

The Shawnee Indian Mission Foundation is very excited to announce that we are planning for the return of the Fall Festival for 2021!



### CALL TO CRAFTERS & ARTISTS

Vendor Reservations

No deposits are required to reserve your space! We fully expect the fall festival to go on as scheduled. However, a final go/no go decision will be made no later than July 15, 2021 and be based on the level of new covid-19 concerns or restrictions in place at that time. We will notify you of any deposits or payments required by July 15. Sign up now! Reserve your space! Fees: standard 10x10 booth \$135 each.

Visit [www.shawneeindianmission.org](http://www.shawneeindianmission.org) to fill out the easy Vendor registration form under events. Questions? Email [info@shawneeindianmission.org](mailto:info@shawneeindianmission.org).



### KANSAS ALLIANCE OF WEAVERS AND SPINNERS (KAWS) CONFERENCE

First United Methodist Church, 2420 Ohio St., Augusta, Kansas

NOVEMBER 5 – 8, 2021

*Call For Ideas!*

### FOR OUR KC WEAVERS GUILD TABLE DISPLAY AT KAWS 2021

A message from Cindy Lessenden, our KAWS representative, [cinkless@aol.com](mailto:cinkless@aol.com)

Each KAWS member Guild will have a table for display of members' work at the KAWS conference in November. The Display should reflect the conference theme of "A Thread Runs Through Us" and showcase the quality and variety of member skills. To start, I am asking for ideas from anyone for an overall design that would fit on an 8 ft x 30 inch table. Once a design plan is decided, members will be asked to loan items they have made or possibly make something that uniquely fits the design plan. Attendees at the conference will vote on the tables and the winner will receive a prize and bragging rights.

So please get those creative juices fired up and let me know your ideas! Also, if you would like to work with me on putting this together (even if you don't go to the conference), please let me know. I'd like to meet directly after the July guild meeting.

### BRAINSTORMING SESSION

THURSDAY JULY 8<sup>TH</sup> AFTER OUR REGULAR MEETING

**Saturday Night De-stash** - Guilds and individuals will have the opportunity to bring and sell no longer needed fiber items. Sellers must man their own tables and conduct their own sales transactions.

**Fashion Show and Display** - Individuals registered for the conference may also enter garments, handwovens and fiber items to win prizes and awards. For more information visit <http://www.kansasweavers.com/>

## ONLINE KNITTING WORKSHOP



### DESIGN YOUR OWN CHRISTMAS STOCKING

Online Zoom Workshop from Yarn Barn

Begins Mon., Aug. 2<sup>nd</sup> 6:30pm – 8:30pm

4 weeks, skip 8/16, \$25

It may only be July, but savvy knitters know that now is the time to think about holiday knitting! In this class you'll create a one-of-a-kind heirloom stocking. You'll learn to knit in the round on circular needles, read a knitting chart, and work with two colors at a time. You'll also learn the basics of sock knitting. You must be able to cast on and work knit and purl stitches. NOTE: This is a virtual class via ZOOM. You will be emailed a class link shortly before class starts. [LEARN MORE AND ENROLL NOW!](#)



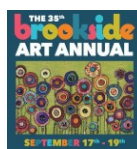
## FALL 2021 ART FESTIVALS



### ART WESTPORT

SEPTEMBER 10-12, 2021

<https://westportkcmo.com/>



### 2021 BROOKSIDE ART ANNUAL

SEPTEMBER 17-19, 2021

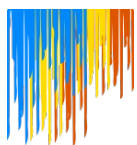
<https://www.brooksidekc.org>



### 90TH ANNUAL PLAZA ART FAIR

SEPTEMBER 24-26, 2021

<https://www.plazaartfair.com/>



### PEACEWORKS KC ART FAIR

SEPTEMBER 25-26, 2021

formerly 'UNPlaza Art Fair'

<https://peaceworkskc.org/unplaza>

## EXHIBIT AT THE NELSON-ATKINS MUSEUM



### EXHIBITION - WEAVING SPLENDOR: TREASURES OF ASIAN TEXTILES

SEPTEMBER 25 2021 - MARCH 06 2022

For the first time in decades, the Nelson-Atkins Museum of Art will display rarely seen Chinese, Indian, Japanese, and Persian costumes and textiles. Made with fine materials, exemplary techniques, and artistry, Asian luxury textiles were central to global trade. <https://nelson-atkins.org/exhibitions/weaving-splendor/>



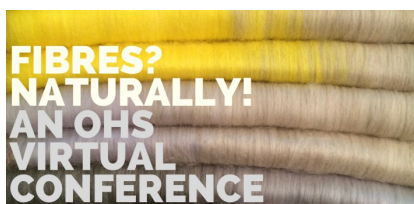
## ONLINE CONFERENCES



### New England Weavers' Seminar

July 16-17, 2021

Internationally-known weavers and fiber artists to speak on an array of exciting topics: Cally Booker, Carol James, Stacey Harvey-Brown and Janet Phillips. For a single \$10 registration fee, you will get access to ALL four talks. No limit to the audience size, but you must register in advance to receive the link and additional information about how to ask questions. Register at <https://www.newenglandweavers.org/>



### Ontario Handweavers & Spinners Guild Virtual Conference

October 21 to 24, 2021

Keynote Speaker Robyn Spady, of Heddlecraft magazine. Workshops will feature Spinning Cotton, Double Weave, Efficient Weaving, Dyeing, Passementerie, Sprang and more. For more info, visit <https://ohs.on.ca/>

## DESIGN RESOURCES



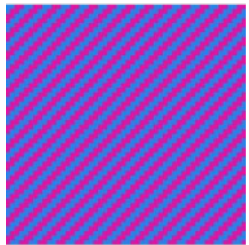
**DESIGNING WITH COLOR** - There is no substitute for sketching fiber art ideas with color pencils and yarn samples. But sometimes some quick color play at the computer can help solidify a plan or spark a new idea. Here are some tools for color design playtime!

**PLAID MAKER** - an online tool for making woven patterns. Just pick your color palette and start weaving them together. You can make stripes, plaid, tartan, gingham and checks. <https://www.plaidmaker.com/>



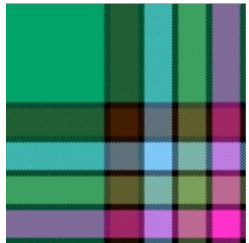
**TIN EYE LAB** - The Multicolor Engine couldn't be simpler. Upload a photo or enter an image URL and hit 'extract colors'. A color palette is generated and best of all the colors are given in percentage from the photo. [http://labs.tineye.com/color/6adbd13ab7312e41077091123b1ae12ca533297d?ignore\\_background=True&width=250&color\\_format=hex&ignore\\_interior\\_background=True&height=181](http://labs.tineye.com/color/6adbd13ab7312e41077091123b1ae12ca533297d?ignore_background=True&width=250&color_format=hex&ignore_interior_background=True&height=181)

**DESIGN SEEDS** - color palettes inspired by beautiful photos. A new color palette released daily or search by season, by color, or by collection. <https://www.design-seeds.com/>



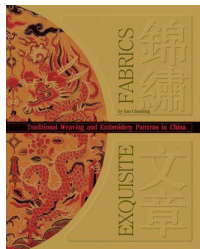
**ADOBE COLOR** - Create a color palette by choosing a base color and applying Color Rules or extract a color palette from a photo. Easy to use. <https://color.adobe.com/create/image>

**COOLORS** - Generate or browse beautiful color combinations for your designs. <https://coolors.co/>



**RANDOM STRIPE GENERATOR** - generates stripe patterns from colors you choose from palette on site. Select desired stripe widths and number of rows. Refresh the page to see iterations of your pattern. [http://www.biscuitsandjam.com/stripe\\_maker.php](http://www.biscuitsandjam.com/stripe_maker.php)

**WEAVING COLOR MIXER** - Tien Chu - Warp and Weave - color mixer to visualize warp & weft color choices in 4 different weave structures. Choose colors for warp and weft either by picking from a color grid/display or by uploading a photo. <https://www.warpandweave.com/weaving-color-mixer/>



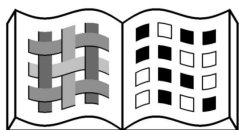
**THE SPENCER ART REFERENCE LIBRARY** is free and open to all. It is located on the second floor of the Bloch Building of the Nelson-Atkins Art Museum, accessible through the Bloch Lobby. You will find resources relating to anything concerning art in which you are interested. Library Hours

Monday, 10 – 5

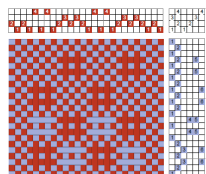
Thursday & Friday: 10 – 5

First Saturday of the month: 10 – 5

<http://www.nelson-atkins.org/visit/library/>



**ON-LINE DIGITAL ARCHIVE OF DOCUMENTS ON WEAVING AND RELATED TOPICS.** Arizona University has an online digital resource for weaving books and other related information that is quite extensive and FREE. Articles, books, ephemera, illustrations, manuscripts, monographs, patents, periodicals, webdocs, and lots of other stuff. <https://www2.cs.arizona.edu/patterns/weaving/weavedocs.html>



**PICTIONARY Weaving PDFs** - Mary Petrini provides illustrated descriptions, as pdfs, for a large number of weave structures. Each pdf includes an explanation of the structure and illustrations of sample fabrics as well as drawdowns where applicable. <https://www.marcypetrini.com/index.php/pictionary>



# INDEX OF FREE DIGITAL RESOURCES

*Podcasts, videos and websites to inspire fiber art creativity*

## PODCASTS

**CLOSE KNIT** <https://www.closeknit.com.au/>

**FIBER NATION AN INTERWEAVE PODCAST**

<https://www.interweave.com/fiber-nation/?section=knitting>

**FIBER TALK** <https://wetalkfiber.com/>

**HAPTIC & HUE: TALES OF TEXTILES** <https://hapticandhue.com/>

**JILLIAN EVE – LET’S MAKE YARN** <https://jillianeve.com/podcast/>

**STITCH PLEASE** <https://stitchpleasepodcast.com/>

**THE FIBER ARTIST PODCAST**

<https://niromastudio.com/pages/the-fiber-artist-podcast>

**THE LONG THREAD PODCAST** <https://longthreadmedia.com/podcast>

**THE PROFESSIONAL WEAVER**

<https://professionalweaversociety.org/podcast/>

**THE UNRAVELING PODCAST** <https://unravelingpodcast.com/>

**THE YARNIACS PODCAST** <http://yarniacs.blogspot.com/>

**TWO EWES FIBER ADVENTURES**

<https://twoewesdyeing.libsyn.com/webpage>

**WEAVE PODCAST** <https://www.gist yarn.com/pages/weave-podcast-aboutv>

**YARNS AT YINHOO** <http://www.yarnsatyinhoo.com/>

## VIDEO PROGRAMS, PANEL DISCUSSIONS, PRESENTATIONS

**BOTANICAL COLORS**

<https://botanicalcolors.com/category/blog/videos/>

**HAYSTACK SCHOOL OF CRAFT**

<https://www.haystack-mtn.org/online-programs>

**INDIGENOUS WOMAN WEAVING THE HIMALAYAN BLANKET**

**SURFACE DESIGN ASSOCIATION**

<https://www surfacedesign.org/events-exhibits/events/>

**TEXTILE TALKS** <https://www.saga.com/resources/textiletalks>

**TEXTILES & TEA** <https://weavespindye.org/textiles-and-tea/>

**THE TEXTILE MUSEUM AT GEORGE WASHINGTON UNIVERSITY**

<https://museum.gwu.edu/programs>

**THE WEAVER SEWS**

<https://www.youtube.com/channel/UCmz2mYvnteUP11-LvK8-eNg>

**NEBRASKA STATE HISTORICAL SOCIETY**

[https://www.nebraskahistory.org/sites/mnh/crazy\\_quilts/index.htm](https://www.nebraskahistory.org/sites/mnh/crazy_quilts/index.htm)

**OKITAMA TRADITIONAL CRAFT**

## ARTICLES, E-BOOKS, MONOGRAPHS, PDF INSTRUCTIONS

**ANDEAN TEXTILE ARTS** <https://andeantextilearts.org/>

**DARYL LANCASTER** <https://www.darylancaster.com/extras.html>

**HANDWOVEN MAGAZINE ARTICLES** <https://handwovenmagazine.com/category/Recent/1/>

**MAFA 2019 TOWEL EXCHANGE E-BOOK** [Download the PDF E-book here](#)

**PRACTICAL WEAVING SUGGESTIONS** <https://www2.cs.arizona.edu/patterns/weaving/practical.html>

**2012 SCARF SWAP FREE PDF FROM ANN ARBOR FIBERARTS GUILD** <http://www.annarborfiberarts.org/docs/ScarfSwap2012.pdf>

**THE TEXTILE CENTER IN MINNEAPOLIS** <https://textilecentermn.org/>



## LINKS TO ONLINE TOOLS & WEBSITES

Visit the “Links” section of our website for more online resources like:

[LINKS TO USEFUL WEAVING TOOLS](#)

[WEAVING & FIBER ART GROUPS & ASSOCIATIONS](#)

[KC WEAVER GUILD MEMBERS FIBER ART & SUPPLY WEBSITES](#)

*Let us know if you have any favorite fiber arts related resources to share!*

Contact Karen Neal at [knealkc@gmail.com](mailto:knealkc@gmail.com)

## CLASSIFIED ADS

### TWO LOOMS FOR SALE: AVL FULL FRAME PRODUCTION DOBBY LOOMS WITH FLYSHUTTLES.

Both are 60" (weaving width). Looms are approximately 20 years old, in decent condition and fully functioning. Please refer to pictures. One of the looms is already completely dismantled and marked, the other one is still set up. These 2 looms are located in the Fiber Department at the Kansas City Art Institute, 4218 Walnut St., KC MO. We are selling these looms FAR below market value due to space constraints and urgency in getting the weaving studio ready to reopen in the Fall. Please email or call for more information or more pictures. New these looms are over \$12,000. Please refer to the AVL website for specific information and current pricing. <https://avllooms.com/collections/looms/products/a-series?variant=18791305838650>

Price: \$2,500 each. Contact: Pauline Verbeek for Kansas City Art Institute [pcowart@kcai.edu](mailto:pcowart@kcai.edu) or 913-403-6006



**BOND KNIT MACHINE** - Brand New. Never Used. In Box. This was my mother's and she would love for this to be used as she loved to knit and weave. Price: \$90.00 OBO Contact: Skylar Sterling-Simon [ssterlingszack@gmail.com](mailto:ssterlingszack@gmail.com) or 303-862-0474



**BOND JUNIOR KNIT MACHINE** - Used Fair Condition. My mother loved to knit and weave. Our family wants to find a good home for this machine. Price: \$45.00 Contact: Skylar Sterling-Simon [ssterlingszack@gmail.com](mailto:ssterlingszack@gmail.com) or 303-862-0474





### WEAVING LOOM, LOOM BENCH & ACCESSORIES

My mother's loom, loom bench and accessories. Our family wants to find a home for this weaving Loom.

My mother would want this to be used. Thank you. 30 years Old, Used.

Price: \$1000 OBO Contact: Skylar Sterling-Simon at [ssterlingszack@gmail.com](mailto:ssterlingszack@gmail.com) or 303-862-0474



### 28" SCHACHT RIGID HEDDLE LOOM

with 4 heddles  
It is new; used once by me and  
once by the person  
I bought it from.

Price: \$200.00  
Contact: Lori Deason at  
[booklvr45@hotmail.com](mailto:booklvr45@hotmail.com)  
or 816-529-5509

### WEAVERS GUILD LOGO EMBROIDERED SHIRTS

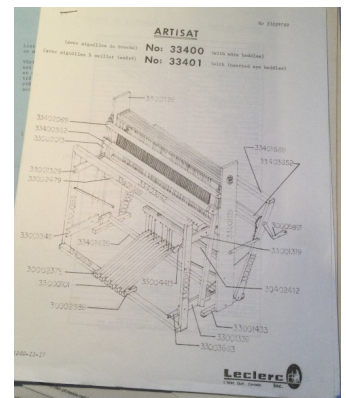
2 available. Size large. Price:\$20 each.

Contact Rebekah Foote via email [rebkeat1@gmail.com](mailto:rebkeat1@gmail.com)



LOOM FOR SALE - 41 years old. It's dusty and has a little rust.

Price: \$250 Contact: Lisa White at [lwhite@mycci.net](mailto:lwhite@mycci.net) or 913-219-0868





### 45" FLOOR LOOM WITH 4 HEDDLES

Includes 2 Spool Racks with 175 Spools, Fabric Strip Holder, 20+ Shuttles, 50+ Fabric Strips.

Age: 20 +/- Years, Good Condition, Kansas City, MO

Price: \$2,500.00 or Best Offer Contact: Linda Mayhall at [jlmayhall@yahoo.com](mailto:jlmayhall@yahoo.com) or 816-898-4401



### SCHACHT MIGHTY WOLF LOOM - 36 inch weaving width, 4 shafts, plus a bench

Excellent condition. Approximately 20 years old. Located in Leawood, Kansas.

Price includes warp board, shuttles, heddles, yarn remnants, weaving books and magazines

Price: \$2000. Contact: Harvey Thalblum at [harvthal@mac.com](mailto:harvthal@mac.com) or 913-669-5230



### UNION LOOM WORKS (BOONVILLE,N.Y.), WEAVING LOOM

All parts are not original, this loom was part of the Historical Society collection. Charlie and Carol Klamm of the late Fiber Factory rebuilt it by using parts we had and patterning off of others. They used it in their shop till 2019. The heddle is 45" wide, loom measures 44" X 52" X 51". Age unknown. It was working and being used till it was relocated in 2019. Pick up only at Chase

County Historical Society & Museum, Cottonwood Falls, Kansas Price: \$400.00

Contact: Dawn Sisson, Curator, Chase County Historical Society - [cscohistsocmuseum@gmail.com](mailto:cscohistsocmuseum@gmail.com) - 620-273-8500







### ASHFORD INKLETTE LOOM

Comes all ready warped and ready to go.  
Includes book, loom shuttle and even some yarn  
to use for the existing warp.  
Nice sized lap loom. Book and loom are like new.

Price: \$45.00 Contact: Catherine Hargis  
[catherine.hargis@gmail.com](mailto:catherine.hargis@gmail.com) - (913) 375-3874

## RETIREMENT SALE

### LOLLY BUXTON WILL HAVE A SPECIAL SALE FOR WEAVERS, KNITTERS AND JEWELRY ARTISTS

on Saturday, July 31, from 9 AM to 3 PM.

The address is: 10602 West 89 Street, Overland Park, Kansas.

Items for sale include yarn, the sheep collection, shuttles and other studio equipment.

Also, beads, baskets and two large yarn cabinets.

Payment by check or small bills only.

## HELP WANTED



**SPARROW WEAVING**

Sparrow Weaving is seeking skilled weavers to create yardage on a project-to-project basis for a clothing line by Amy Bayless. Weaving width is at least 33 inches and weave structures will vary. They will provide project kits that include yarn and weaving details. Work is expected to be completed within three weeks. Please contact Sparrow Weaving via email at [sparrow.weaving@gmail.com](mailto:sparrow.weaving@gmail.com) if you would like to pursue this opportunity.

Sparrow Weaving is a local business owned by Weavers Guild member Nancy Bayless Piepenbring and her daughter Amy Bayless Mortera. They began their business five years ago in men's wear, selling hand woven pocket squares. They will soon expand to include women's wear. You can check them out on Instagram @sparrow.weaving and @amybaylesskc.

